

**In Response to God**  
**Activities for the week of November 20, 2022**

Today's Lectionary: Jeremiah 23:1-6; Luke 1:68-79; Colossians 1:11-20; Luke 23:33-43

Sunday	November 20	9:00 am – Church School 10:00 am – Worship 11:00 am – Thanksgiving Lunch
Monday	November 21	7 am –6 pm – Houston Dragon Academy
Tuesday	November 22	7 am –6 pm – Houston Dragon Academy 10 am-2 pm – CCSC food collection
Wednesday	November 23	7 am –6 pm – Houston Dragon Academy
Thursday	November 24	Happy Thanksgiving!
Friday	November 25	7 am –6 pm – Houston Dragon Academy
Saturday	November 26	9 am-6 pm – Houston Dragon Academy
Sunday	November 27	9:00 am – Church School 10:00 am – Worship 11:00 am – Fellowship & Refreshments
<b>Save the Date:</b>	December 11	10:00 am – Worship/Choir & Chamber Orchestra - <i>Tapestry of Light...A Celtic Christmas</i>
	December 13	6 –8 pm – Live Nativity
	December 24	6:00 pm – Candlelight, Lessons & Carols Come at 5:30 p.m. & enjoy Christmas music from St. Luke's musicians

ST. LUKE'S STAFF

Pastor	The Rev. W. Scott Harbison
Parish Associate	The Rev. Dr. Bill Wade
Director of Music-Organist/Choirmaster	Marvin Gaspard
Business Manager	Patti Ernst
Assistant to Head of Staff	Mary Ann White
Pastor's Aide	Jean Kopp



St. Luke's Presbyterian Church  
 8915 Timberside Drive  
 Houston, Texas 77025  
 713.667.6531  
[www.stlukespres.org](http://www.stlukespres.org)



St. Luke's Presbyterian Church  
 November 20, 2022

---

---

# The Order of Worship

November 20, 2022

Christ the King Sunday

---

## GATHERING AROUND THE WORD

*Please begin quiet preparation for worship as the Tolling begins.*

TOLLING

WELCOME/PASSING OF THE PEACE

✠ OPENING HYMN 143 All Hail the Power of Jesus' Name!  
DIADEM

CONFESSION OF SIN AND ASSURANCE OF FORGIVENESS

**People's Response:** Thanks be to God.

## HEARING THE WORD

SCRIPTURE READING (NT p. 58) Luke 1:68-79

REFLECTION ON THE WORD Rev. W. Scott Harbison  
"The Once and Future King"

## RESPONDING TO THE WORD

✠ APOSTLE'S CREED Hymnal p. 14

I believe in God the Father Almighty, Maker of heaven and earth. And in Jesus Christ his only Son our Lord, who was conceived by the Holy Ghost, born of the Virgin Mary, suffered under Pontius Pilate, was crucified, dead, and buried; he descended into hell; the third day he rose again from the dead; he ascended into heaven, and sitteth on the right hand of God the Father Almighty; from thence he shall come to judge the quick and the dead. I believe in the Holy Ghost; the holy catholic church; the communion of saints; the forgiveness of sins; the resurrection of the body; and the life everlasting. Amen.

SHARING OF JOYS AND CONCERNS

PASTORAL PRAYERS

OFFERTORY  
Based on DIADEMATA

Crown Him with Many Crowns  
George J. Elvey, arr. Robert Sterling

✠ DOXOLOGY 592

✠ COMMUNION HYMN 559  
KREMSER

We Gather Together

SACRAMENT OF THE LORD'S SUPPER

Minister: The Lord be with you.

**People: And also with you.**

Minister: Lift up your hearts!

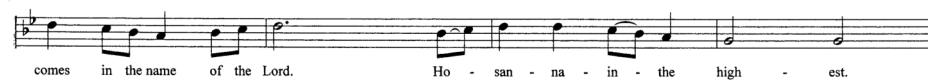
**People: We lift them up to the Lord.**

Minister: Let us give thanks to the Lord our God.

**People: It is right to give our thanks and praise.**

The prayer continues . . .

The congregation sings . . .



DISTRIBUTION OF ELEMENTS  
Based on PICARDY

Christus Paradox  
French carol, arr. Alfred V. Fedak

✠ RESPONSE  
Please join the choir in singing

For Thine Is the Kingdom  
From *The Lord's Prayer*  
Albert Hay Malotte (1895-1964)

✠ BENEDICTION

POSTLUDE

Fantasy on DIADEMATA  
George J. Elvey (1816-1893), arr. Don Hustad (1918-2013)

**Welcome to St. Luke's Presbyterian Church!** If you are looking for a church home in Houston, we invite you to unite with St. Luke's. If you would like more information, please speak to Rev. Harbison after worship.

**Sunday School: Children's Sunday School** meets in Room 115 at 9 a.m. with Don Mims teaching the class. **The Adult Sunday School** class meets in the Library at 9 a.m. Patti Ernst is leading the class on a study of the Book of Romans. Our **Youth Group** meets at 9 a.m. in the history room (#129). Children and adult classes offer a virtual class alternative. Please let us know if you would like to receive a Zoom invitation.

**Today's flowers** are given to the glory of God and "in loving memory of Beverly Graves Shell, our dear mother and wonderful example of God's love." by the Dickinson family.

**The red rose on the Chancel this morning** is in celebration of Tom and Marty Gwillim's grandson, Oliver Renato Peña, born on November 15th. Oliver's parents are Megan and Renato Peña.

**Thanksgiving Lunch:** Today we will celebrate Thanksgiving as a church family with a meal by Pappas Catering and desserts provided by the good cooks at St. Luke's. Please join us after worship!

**We are adopting several families** for Thanksgiving and Christmas to help them celebrate the holidays. Please consider giving to this and to the Minister's Discretionary Fund, as this will be a tough holiday season for some of our neighbors. Please note "holiday families" in your donation.

**CCSC's Jingle Bell Express** will serve families and children in need in three ways: grocery gift cards to alleviate hunger, books to promote literacy, and toys for enjoyment and learning. **St. Luke's "Elledge Toy Store"** will be open today and next Sunday. David and Loretta shop for age appropriate and well priced gifts and provide you an opportunity to shop at St. Luke's.

**Live Nativity on Tuesday, December 13:** Re-enactments will be at 6 & 7 p.m. We will need volunteers to recreate the Nativity scene, so watch for more information coming soon. Don't forget to invite your neighbors and family to attend.

**Poinsettias at Christmas:** If you would like to purchase a poinsettia, please fill out the form in today's bulletin. You can choose to designate your gift in memory of a loved one or in honor of a friend or family member. On Christmas Eve a list is printed with the names of the people remembered by your gift.

**Donations needed for Christmas Grace Bags:** We are planning to contribute 300 grace bags to Montrose Street Reach for their Christmas Backpack project. We need the following items to fill the bags: granola bars; fruit cups; juice packs; Vienna sausage; snack crackers and 8 oz. bottles of water. Donations are needed by December 4th. Thank you!