

Tapestry of Light... A Celtic Christmas

By Joseph M. Martin

Sunday, December 11
10:00 a.m.



Presented by

St. Luke's Chancel Choir
and Chamber Orchestra

In Response to God Activities for the week of November 27, 2022

Today's Lectionary: Isaiah 2:1-5; Psalm 122:1-9; Romans 13:11-14; Matthew 24:36-44

Sunday	November 27	9:00 am – Church School 10:00 am – Worship
Monday	November 28	3 -7 pm – Houston Dragon Academy
Tuesday	November 29	3 -7 pm – Houston Dragon Academy 10 am-2 pm – CCSC food collection
Wednesday	November 30	3 -7 pm – Houston Dragon Academy
Thursday	December 1	3 -7 pm – Houston Dragon Academy 6:30 pm –
Friday	December 2	3 -7 pm – Houston Dragon Academy
Saturday	December 3	9 am-6 pm – Houston Dragon Academy
Sunday	December 4	9:00 am – Church School 10:00 am – Worship 12-2 pm – Choir/Orchestra Rehearsal
Save the Date:	December 11	10:00 am – Worship - Choir & Chamber Orchestra & <i>Tapestry of Light...A Celtic Christmas</i>
	December 13	6 –8 pm – Live Nativity
	December 24	5:30 pm – Music of the Christmas season 6:00 pm – Candlelight Service of Lessons & Carols
	January 1	10:00 am – First Day Prayer Service

ST. LUKE'S STAFF

Pastor	The Rev. W. Scott Harbison
Parish Associate	The Rev. Dr. Bill Wade
Director of Music-Organist/Choirmaster	Marvin Gaspard
Business Manager	Patti Ernst
Assistant to Head of Staff	Mary Ann White
Pastor's Aide	Jean Kopp



St. Luke's Presbyterian Church
8915 Timberside Drive
Houston, Texas 77025
713.667.6531
www.stlukespres.org



HOPE

St. Luke's Presbyterian Church
November 27, 2022

The Order of Worship

November 27, 2022

FIRST SUNDAY OF ADVENT

GATHERING AROUND THE WORD

Please begin quiet preparation for worship as the Tolling begins.

TOLLING

PRELUDE

Laura Smith, harp

In the Bleak Midwinter

Gustav Holst (1874-1934), arr. Whitney Dobbins

WELCOME/PASSING OF THE PEACE .

THE ADVENT WREATH

Adult Sunday School Class

O Come, O Come, Emmanuel

12th c. Latin melody

Choir:

*“O Come, o come, Emmanuel...
And ransom captive Israel.”*

Congregation: *“Rejoice! Rejoice! Emmanuel
Shall come to thee, O Israel!”*

✦ OPENING HYMN 2

HYFRYDOL

Come, Thou Long-Expected Jesus

CONFESSION OF SIN AND ASSURANCE OF FORGIVENESS

Congregation: Thanks be to God

HEARING THE WORD

SCRIPTURE READING (NT p. 27)

Matthew 24:36-44

ANTHEM

Ensemble

Long Time Ago

English folk melody, arr. Joseph M. Martin

REFLECTION ON THE WORD

Rev. W. Scott Harbison

“Sleepers Awake!”

RESPONDING TO THE WORD

✦ HYMN OF RESPONSE 20

ABRYSTWYTH

Watchman, Tell Us of the Night

SHARING OF JOYS AND CONCERNS

PASTORAL PRAYERS

OFFERTORY

The First Noel

English carol, arr. Whitney Dobbins

✦ OFFERTORY RESPONSE

(Please join the choir in singing)

“Gloria in excelsis Deo;
Gloria in excelsis Deo!”

CHORAL RESPONSE

Rejoice!

12th c. Latin melody, arr. Marvin Gaspard

✦ BENEDICTION

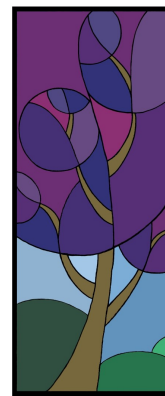
POSTLUDE

Based on HYFRYDOL

Come, Thou Long-Expected Jesus

Rowland Hugh Prichard (1811-1887)

Arr. Marvin Gaspard



HOPE

Welcome to St. Luke’s Presbyterian Church! If you are looking for a church home in Houston, we invite you to unite with St. Luke’s. If you would like more information, please speak to Rev. Harbison after worship.

Sunday School: Children’s Sunday School meets in Room 115 at 9 a.m. with Don Mims teaching the class. **The Adult Sunday School** class meets in the Library at 9 a.m. Patti Ernst is leading the class on a study of the Book of Romans. Our **Youth Group** meets at 9 a.m. in the history room (#129). Children and adult classes offer a virtual class alternative. Please let us know if you would like to receive a Zoom invitation.

The image of the Jesse Tree on today’s bulletin was created by our own Gage Campos. It symbolizes Jesus’ ancestors and other important people, events, and ideas in his heritage. Thank you, Gage, for creating this lovely image.

Ensemble: Janet Bardin, Randall Bardin, Jadon Campos, Ann Guercio, and Carol Wilson.

Advent devotionals are available in the Narthex today. These reflections on the biblical texts of the Christmas story were prepared by the faculty of Austin Seminary. As we journey through Advent to Christmas, these readings will draw us closer to one another and to Christ as we reflect on God’s faithfulness and promise.

Shop at St. Luke’s Toy Store today! David and Loretta Elledge have a convenient way for you to purchase toys at reasonable prices for CCSC’s Jingle Bell Express. It’s an opportunity for a one stop shopping experience with age appropriate toys at reasonable prices including delivery to CCSC.

Save the date for Live Nativity December 13: Nativity re-enactments will take place at 6 & 7 p.m. with scripture narration, and choral music. We will have refreshments and our nativity animals are back this year. Please consider volunteering for the cast or crew to help make our 15th annual Live Nativity the best!. Speak to Debbie Harbison for details.

We are adopting several families for Thanksgiving and Christmas to help them celebrate the holidays. Please consider giving to this and to the Minister’s Discretionary Fund, as this will be a tough holiday season for some of our neighbors. Please note “holiday families” in your donation.

Donations needed for Christmas Grace Bags: We are planning to contribute 300 grace bags to Montrose Street Reach for their Christmas Backpack project. We need the following items to fill the bags: granola bars; fruit cups; juice packs; Vienna sausage; snack crackers and 8 oz. bottles of water. Donations are needed by December 4th. Thank you!

Chrismon Wreaths: Years ago, the women of our church made the beautiful Chrismons that we enjoy each year during the season of Advent. Many of those women are now part of the Church Triumphant, making the gift of these ornaments more precious. Each handmade Chrismon was intricately beaded, decorated, and given in love to St. Luke’s. Just as their gift of the Chrismons to us is a treasure, so is God’s gift to us – His only Son, Jesus Christ.